



EP304

Product name

Earth Positive® Half Zip Hoodie

Fibre composition / Yarn type

100% GOTS Organic Cotton Compact Spun

Fabric type / Weight

3-ply french terry brushed 300 g/m²

Commodity code

6110 2091 00

Origin

India

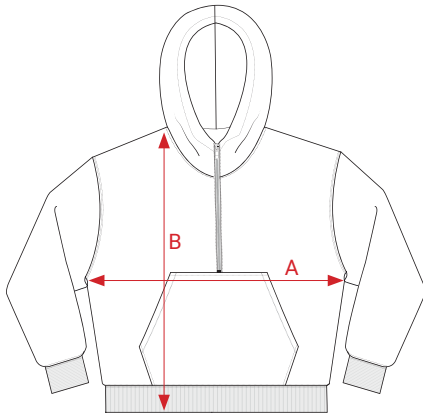
Available sizes

XS S M L XL 2XL 3XL

Certifications



Available colours



Size spec

| Size | Width (A) | | Length (B)* | |
|------|-----------|------|-------------|------|
| | cm | inch | cm | inch |
| XS | 58 | 22¾ | 67.5 | 26½ |
| S | 61 | 24 | 70.5 | 27¾ |
| M | 64 | 25¼ | 72.5 | 28½ |
| L | 67 | 26½ | 74.5 | 29¼ |
| XL | 70 | 27½ | 76.5 | 30 |
| 2XL | 73 | 28¾ | 77.5 | 30½ |
| 3XL | 76 | 30 | 77.5 | 30½ |

Length (B)*: The length of EP304 has been updated since March 2025 to improve the fit. The old lengths measured XS - 63.5, S - 66.5, M - 68.5, L - 70.5, XL - 72.5, 2XL - 74.5, 3XL - 75.5


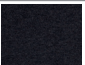

Discharge printing suitability

Important: This guide serves as a general reference, and results may vary. We strongly recommend testing prior to production.

Core colours

| | Very Good | Moderate | Not Suitable |
|---|-----------|----------|--------------|
|  Black BL | ✓ | | |

Sueded colours

| | Very Good | Moderate | Not Suitable |
|--|-----------|----------|--------------|
|  Sueded Black SUBL | ✓ | | |
|  Sueded Black Heather SUBLHE | | ✓ | |
|  Sueded Light Blue Heather SULBHE | | ✓ | |

Printing Guide

| Print type | Print type | Printing suitability 0 = Not Suitable, 1 = Poor, 2 = Moderate, 3 = Good, 4 = Very Good, 5 = Excellent | Printing recommendations |
|---|--------------------|--|---|
| Fleece 100% Organic Cotton solid colours (excluding RFD & Sueded colours) | Screen print | ★★★★★ | Follow manufacturer's recommendations for printing and curing settings. |
| | Discharge | ★★★★★ | The results may vary from one colour to another. Refer to our discharge printing recommendations on the following page. |
| | Transfer (Sticker) | ★★★★☆ | Follow manufacturer's recommendations for curing settings. |
| | Direct to garment | ★★★★★ | Follow manufacturer's recommendations for printing and curing settings. |
| | Embroidery | ★★★★★ | Direct embroidery, stitched patch, labels |

***Maximum heat recommendation for back neck label** Fusing 180°C / 3-6 sec, 6 psi
Curing 180°C / 1 min

| Print type | Print type | Printing suitability 0 = Not Suitable, 1 = Poor, 2 = Moderate, 3 = Good, 4 = Very Good, 5 = Excellent | Printing recommendations |
|---|--------------------|--|---|
| Fleece 100% Organic Cotton Sueded Colours | Screen print | ★★★★★ | Follow manufacturer's recommendations for printing and curing settings. |
| | Discharge | ★★★★★ | The results may vary from one colour to another. Refer to our discharge printing recommendations on the following page. |
| | Transfer (Sticker) | ★★★★☆ | Follow manufacturer's recommendations for curing settings. |
| | Direct to garment | ★★★★☆ | Follow manufacturer's recommendations for printing and curing settings. |
| | Embroidery | ★★★★★ | Direct embroidery, stitched patch, labels |

***Maximum heat recommendation for back neck label** Fusing 180°C / 3-6 sec, 6 psi
Curing 180°C / 1 min

| Print type | Print type | Printing suitability 0 = Not Suitable, 1 = Poor, 2 = Moderate, 3 = Good, 4 = Very Good, 5 = Excellent | Printing recommendations |
|--|--------------------|--|---|
| Fleece 100% Organic Cotton Heather Colours | Screen print | ★★★★★ | Follow manufacturer's recommendations for printing and curing settings. |
| | Discharge | ★★★★☆ | The results may vary from one colour to another. Refer to our discharge printing recommendations on the following page. |
| | Transfer (Sticker) | ★★★★☆ | Follow manufacturer's recommendations for curing settings. |
| | Direct to garment | ★★★★☆ | Follow manufacturer's recommendations for printing and curing settings. |
| | Embroidery | ★★★★★ | Direct embroidery, stitched patch, labels |

***Maximum heat recommendation for back neck label** Fusing 180°C / 3-6 sec, 6 psi
Curing 180°C / 1 min