



BAM03

Product name

Bamboo Jersey Polo Shirt

Fibre composition / Yarn type

70% Bamboo-Derived Viscose, 30% Organic Cotton

Fabric type / Weight

Jersey 5.3oz/yd² 180 g/m²

Commodity code

6109 1000 10

Origin

Turkey

Available sizes

S M L XL 2XL

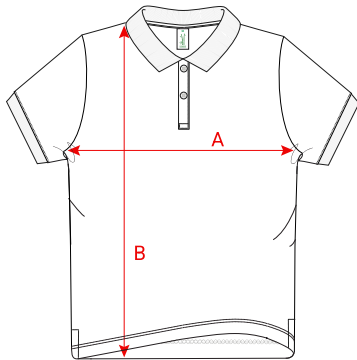
Certifications



Available colours



Black
BL



Size spec

Size	Width (A)		Length (B)	
	cm	inch	cm	inch
S	49	19¼	68	26¾
M	52	20½	70	27½
L	55	21½	72	28¼
XL	58	22¾	74	29¼
2XL	61	24	76	30

Printing Guide

Print type	Print type	Printing suitability 0 = Not Suitable, 1 = Poor, 2 = Moderate, 3 = Good, 4 = Very Good, 5 = Excellent	Printing recommendations
Bamboo Fabric: Jersey 70% Bamboo-derived Viscose 30% Organic Cotton	Screen print	★★★★☆	Follow manufacturer's recommendations for printing and curing settings. Curing temperature maximum of 160 degrees. The nature of the bamboo fabric requires limited heat - the higher the heat the more the fabric will feel harder and can shrink. Testing is recommended.
	Discharge	★☆☆☆☆	This fabric is not recommended for discharge printing. Colour consistency cannot be maintained and the fabric may be damaged by the process. Since it is a special fiber, there is a risk of burning or yellowing of the fabric in discharge printing and it needs to be tested. Also, the fabrics that will be discharge printed should be notified in advance and a special finish should be applied accordingly.
	Transfer (Sticker)	★★★★★	Pressing temperature should not exceed 160 degrees.
	Direct to garment	★★★★☆	Follow manufacturer's recommendations for printing and curing settings. Because of the special fiber, the surface of these fabrics is slightly hairy. The solution process should be done well before printing. In fabrics where the solution balance cannot be adjusted, washing fastness may be poor.
	Embroidery	★★★★☆	Although it is high in grammage, the fabric is more delicate in nature than cotton fabric. There may be a risk of puncture / tear in multi-colored and embroidered patterns. It should be done in a controlled manner.

***Maximum heat recommendation for back neck label** Fusing 180°C / 3-6 sec, 6 psi
Curing 180°C / 1 min